



Bryniau Clwyd a Dyffryn Dyfrdwy Clwydian Range and Dee Valley

Summary of 2017 Clwydian Range and Dee Valley AONB Sustainable Development Fund

Introduction

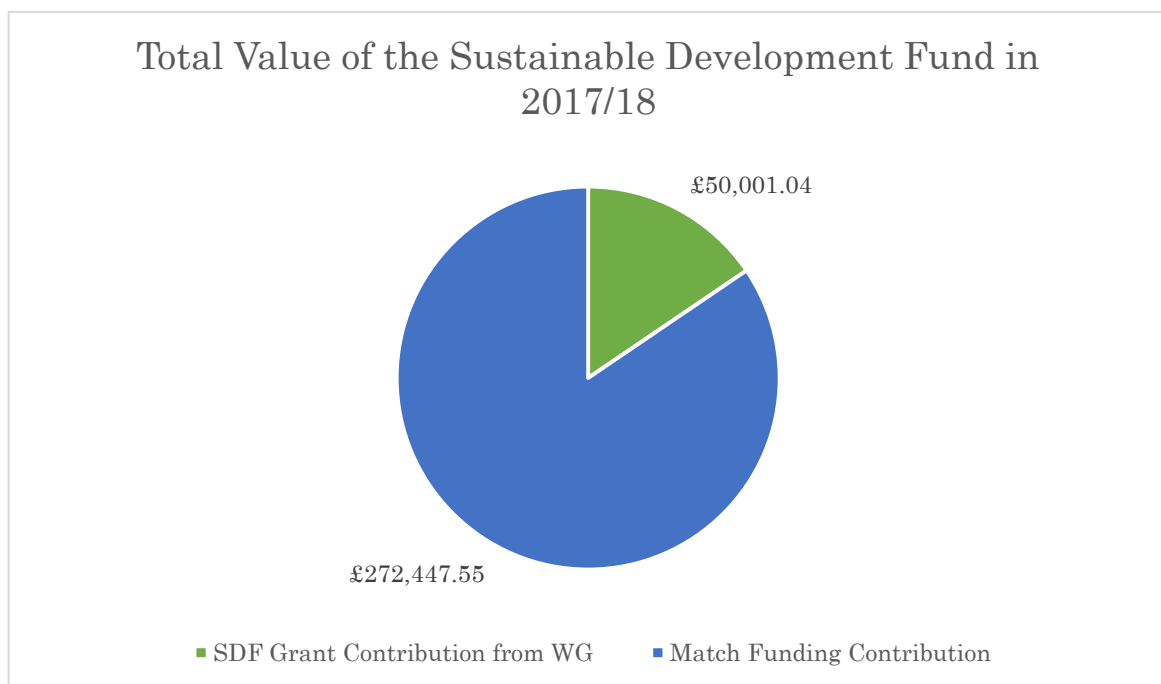
This document is a short summary of the activities of the Clwydian Range and Dee Valley AONB's Sustainable Development Fund relating to the Management Plan's Priorities in 2017/18.

Background

Every year the Welsh Government provide Areas of Outstanding Natural Beauty grant funding called the Sustainable Development Fund (SDF). It is an opportunity for individuals, groups and communities to apply for grant aid for innovative, sustainable, environment projects, which involve local communities with the aim of achieving a more sustainable way of living in a countryside of great natural beauty and diversity.

For financial year 2017/18 WG gave an allocation of £55,000 towards activities in the Clwydian Range and Dee Valley.

Funding breakdown

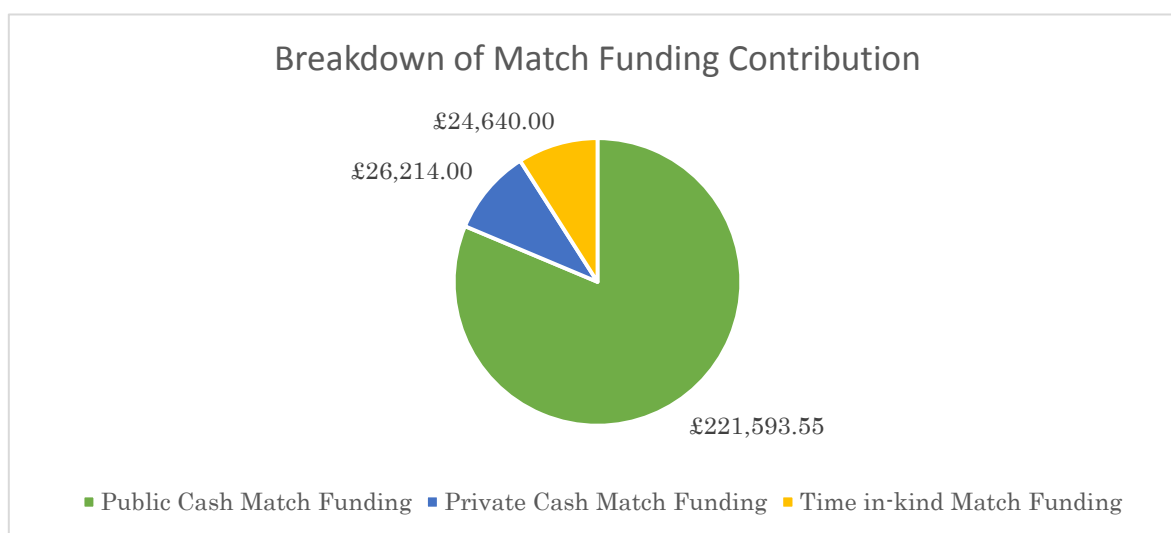


Two claims were submitted during the year;

- Claim 1 – 20.12.2017 £17,800.00
- Claim 2 (Final) 22.03.2018 £37,201.04

Match Funding

As per previous year the majority of cash match funding is secured by other public sources. A breakdown can be seen below.



Performance Indicators

A condition of the funding received is to achieve set targets. These are outlined below;

Description of target	Target for CRDV AONB	Achieved to date
Creation of job or jobs supported	1	3
Volunteering opportunities	5	9 – 3000+ volunteer hours have been recorded
Deliver training or awareness raising sessions on sustainability	3	6
Maintain high level funding levered in from public, private and voluntary sector		

How has the Sustainable Development Fund contributed towards the Management Plan's priorities?

In this section we demonstrate how SDF projects are contributing towards the AONB's Management Plan priorities and is broken down per Special Quality. (Page 97 of Management Plan).

Objective		Policy ref.	Actions	SDF Reference	Description
LQCO1	Ensure that the natural resources and special qualities of the AONB are recognised and valued	PolSq1	Support Cadwyn Clwyd Renewable Energy Pilot projects and other appropriate community based projects which seek to mitigate the impact of climate change and reduce the carbon footprint of the AONB without harming the special qualities and features of the area or its character and appearance	CRDV_15 Ynni Lleol £3,666	<p>The project employed a coordinator and funded general set up costs of an Energy Local Club trial.</p> <p>The trial matches energy generated by local renewables with local demand. This provides two benefits:</p> <ul style="list-style-type: none"> • Increased revenue for local renewable energy generators • Decreased energy bills for local householders
BO1	Using SDF and other funds develop a Countryside Grant Schemes to support projects which will maintain and enhance the most important boundaries in the	PolHE1	Continue to support through SDF a grant scheme to facilitate boundary improvement.	CRDV_17 Lost Landscapes £74,524	<p>The AONB have been working with landowners in the Morwynion Valley, between Corwen and Llandegla, to develop a landscape enhancement scheme. The schemes includes:</p> <ul style="list-style-type: none"> • <i>hedgerow restoration</i> • <i>drystone walling</i> • <i>pond creation</i> • <i>moorland management</i> • <i>Parkland and veteran tree management</i>

	AONB as well as other features				<ul style="list-style-type: none"> • <i>Wildflower meadow creation</i> • <i>Roadside Nature Reserve management.</i> • <i>Small woodland planting</i>
HMRO 4	Associate food production with ecosystem management	PolHW4	Engage producers and retailers with the Clwydian Range Food Trail project to promote local produce and give added value to produce associated with positive conservation works	CRDV_09 Light Up Local £5,500	<p>SDF supported two local food consortiums the Clwydian Range Food Trail and the Llangollen and Dee Valley Good Grub club to work with a number of already established events to introduce a quality local food element.</p> <p>The project also demonstrated that local food can sustainably be part of already established events and established a framework for the relationship between event organisers and local producers and retailers to continue beyond the life of the project.</p>
IVCO5	Target information relating to the Countryside Code, behaviour and the impact of visitors on conservation status of key sites	PolART 1	Collect and disseminate data on actual and potential users recreational needs and aspirations	CRDV_05 Visitor Appraisal Study £30,000	<p>Working in partnership with Denbighshire CC, Wrexham CBC and Canal and River Trust we are currently undertaking a feasibility study to critically assess/address issues of pressure and congestion in the Clwydian Range and Dee Valley AONB whilst at the same time identify maximising benefits to surrounding areas of North East Wales.</p> <p>The study will develop a greater understanding of the impacts of high visitor numbers:</p> <ol style="list-style-type: none"> 1. Impact and value to the local economy 2. Impact and value to the health and wellbeing of the surrounding communities. 3. Impacts on the landscape and sensitive ecological / historical value. 4. Gather available evidence on visitor behaviour and motivations

					5. Gather further evidence in the form of visitor surveys to fill data gaps.
ODPPR 04	Raise awareness of the acknowledged health and well-being benefits provided by the AONB and develop initiatives promoting physical activity particularly walking and cycling	PolART 3	Continue to develop through partners volunteer and events programme activities that encourage the use of the countryside. Develop and promote Health Walks and Green Gyms close to AONB settlements.	CRDV_11 Actif Woods £4,000	The main aim of the Actif Woods project is to improve health and wellbeing by getting people active in woodlands. With support from SDF people have improved physical, mental and social well-being. Local organisations and activity leaders have increased skills and capacity to run woodland activities for people. Organisations will be aware of the benefits of and opportunities for health and wellbeing activities in woodlands. Local woodland will be better accessed and improved

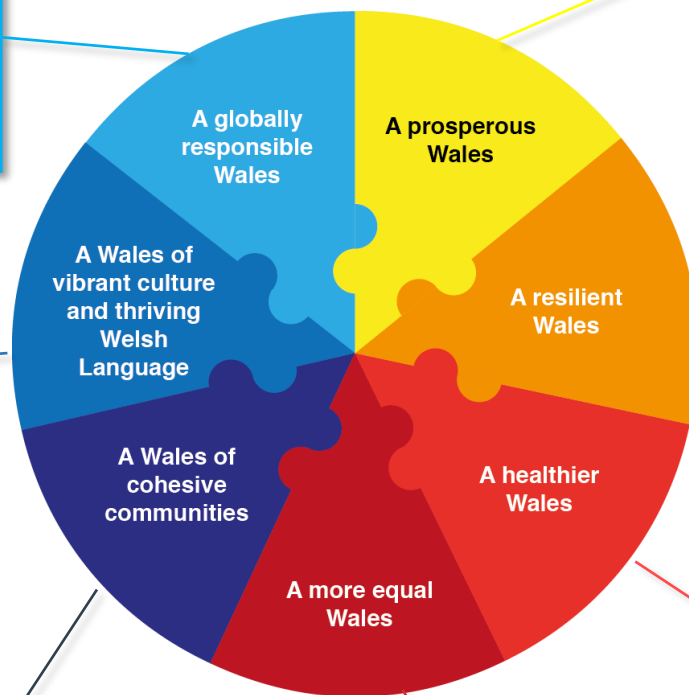
How has the Sustainable Development Fund contributed towards the Well-Being goals?

Another condition of the Welsh Government grant includes the demonstration of how projects contribute to the Well-Being goals.

AONB Campaigns and our partnership project with the Wales Outdoor Partnership called “Enjoy the Great Welsh Outdoors safely” was a strategic response to the impacts of land use and environmental change on the AONB

Allwedd Enwau a new Welsh Language App has stimulated awareness of and interest in cultural diversity within the AONB. Dating Old Welsh Houses and the Clwydian Range Archaeology Group have conserved, enhanced and raised awareness of character and local distinctiveness of historic features.

A telephone kiosk regeneration project has assisted the community of Carrog to enhance the local characteristics of our community and inform local people and visitors about the wildlife, landscape and land use of the area.



We have supported local food groups to embrace the opportunities and responsibilities of producing food and drink in a protected area.

A partnership project set out to determine the population size and status, identify threats, and produce a conservation plan to safeguard the Llangollen whitebeam.

The Actif Woods programme and Wrexham and Prestatyn Walking Festivals have raised awareness of the acknowledged health and well-being benefits provided by the AONB and developed initiatives promoting physical activity.

AONB Community Transport Scheme and Llangollen WILD project (seeking to establish indoor/outdoor learning space) has/will remove physical and psychological barriers to access enabling all sectors of society to participate in and benefit from recreational opportunities.



Project highlights in pictures

